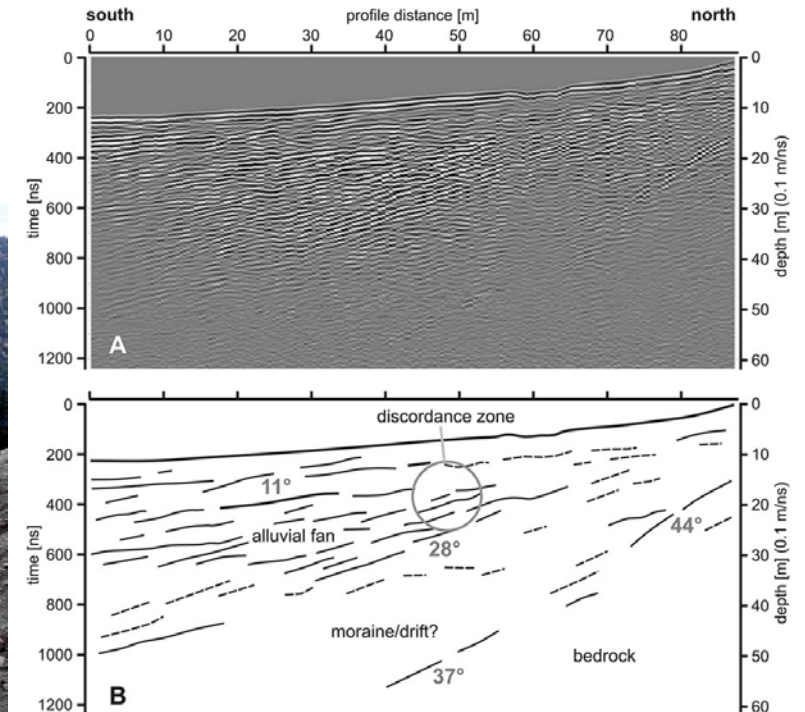
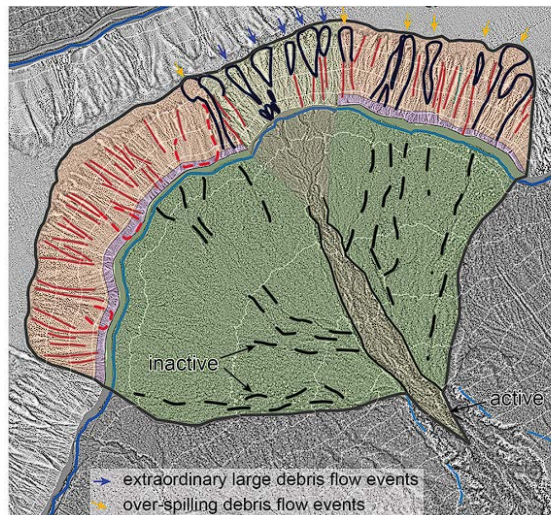


# Deciphering the sedimentary history of alluvial fans using Ground Penetrating Radar (1 MSc)

**Where/When?** Plansee, Tirol; Fieldwork Sept/Oct 23

**What?**

- Identifying internal sedimentary structures of debris flow cones
- Differentiating phases of event sedimentation
- Quantifying debris flow volumes on alluvial fans



Sass, O., Krautblatter, M. & Morche, D. (2007)



**Kontakt:**

**Carolin Kiefer**

**carolin.kiefer@tum.de**